

## Weeps for Block Basement Walls



### Applications

- ✔ Interior Below Grade

*Vent Mat installed on footing to drain block cores*

## Drain Block Basement Walls to Stay Dry

Block basement walls are an economical choice but increase the risk of moisture penetration and damp basements. Vent Mat drains block cores into the drain field. Keep your basement dry with MTI's complete below grade moisture management systems.



*Rolls of self-spaced weeps make installation fast & simple*

## The MTI Advantage

- ✔ Forms Bottom of Bed Joint of Mortar
- ✔ Creates Sixteen Weep Holes in Every Block
- ✔ Weeps at the Lowest Point of the Wall
- ✔ Weeps in Every Core
- ✔ Easy to Install Self-Spaced Weeps
- ✔ 100% Recycled Content

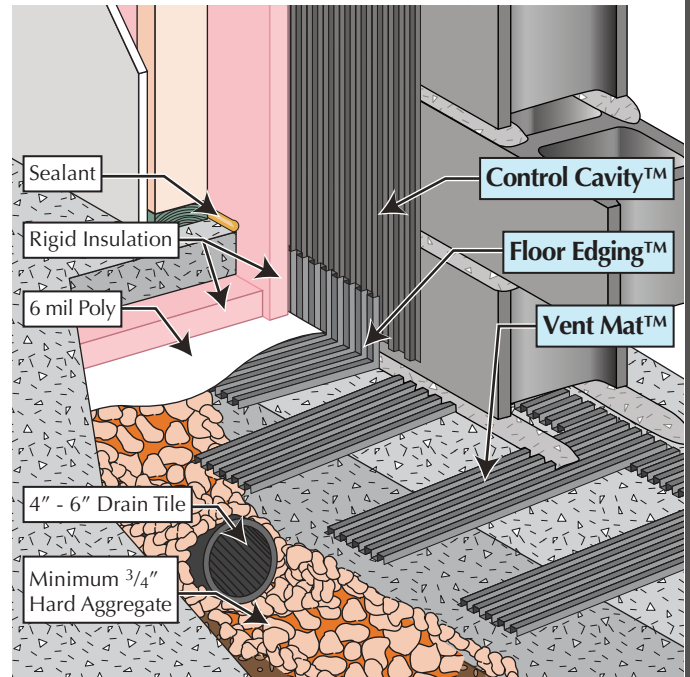


*Vent Mat creates multiple weep tunnels in each block core*

# Installation

- Place Vent Mat™ on footings with continuous belt centered in block core and legs extending to the interior drain field
- Place bed joint of mortar on Vent Mat and lay masonry units

Complete Installation at [MTIdry.com/installation](http://MTIdry.com/installation)



# Technical Information

## Material Description

High impact polystyrene sheets, 0.024 inch (0.6 mm) thick, formed with corrugations.

## UV Exposure

Over 9 weeks in accelerated UV testing (ASTM G 154)

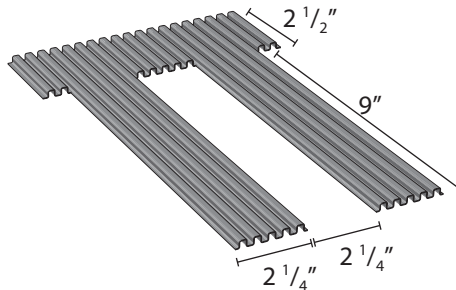
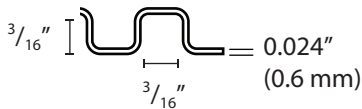
## Fungi Resistance

Does not support fungal growth (ASTM C 1338)

## Vent Mat VM 9025

### Related Products:

- Floor Edging™
- Control Cavity™



<b>Roll</b>	25 ft
<b>Bundle</b>	50 ft / 2 rolls
<b>Box</b>	300 ft / 6 bundles
<b>Pallet</b>	2,400 ft

Questions about application, installation or ordering?  
[MTIdry.com/vent-mat](http://MTIdry.com/vent-mat)

